

Dogfish Shark Skull

Active Learning Kit



By 3D Anatomy Studios

Included in your kit

3D printed parts (non-magnetic)

Brain (inside chondrocranium)
Scleral ring
Olfactory organ

Other components

Paper branchial arches
Pipe cleaner cranial nerves
Ribbon ligaments
Rubber band muscles

3D printed parts (magnetic)

Chondrocranium (two halves)
Palatoquadrate
Meckel's cartilages
Hyomandibulae
Ceratohyals
Basihyal

Box-integrated stand

Built for hands-on learning

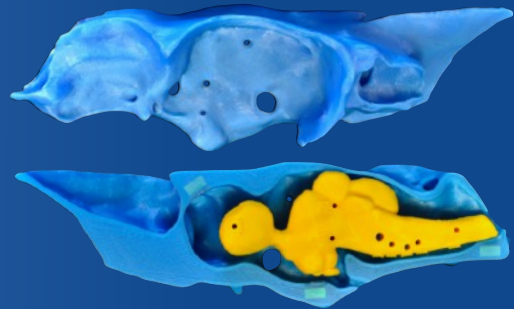
A moving model

Unlike a *fixed* specimen, this model **moves**. Thanks to 40+ embedded magnets, your students will **easily simulate complex motions** such as jaw opening, jaw protrusion, and neurocranial elevation.



Durable details

Printed at **2X life-size** in **durable** PLA plastic, this model will hold up to years of handling and close observation by your students — no jars or alcohol needed.



Color connections

Consistent **color coding** of the cartilages and cranial nerves will help your students connect each splanchnocranium element with its corresponding **gill arch derivation** and **innervation**.



*Prices subject to change.