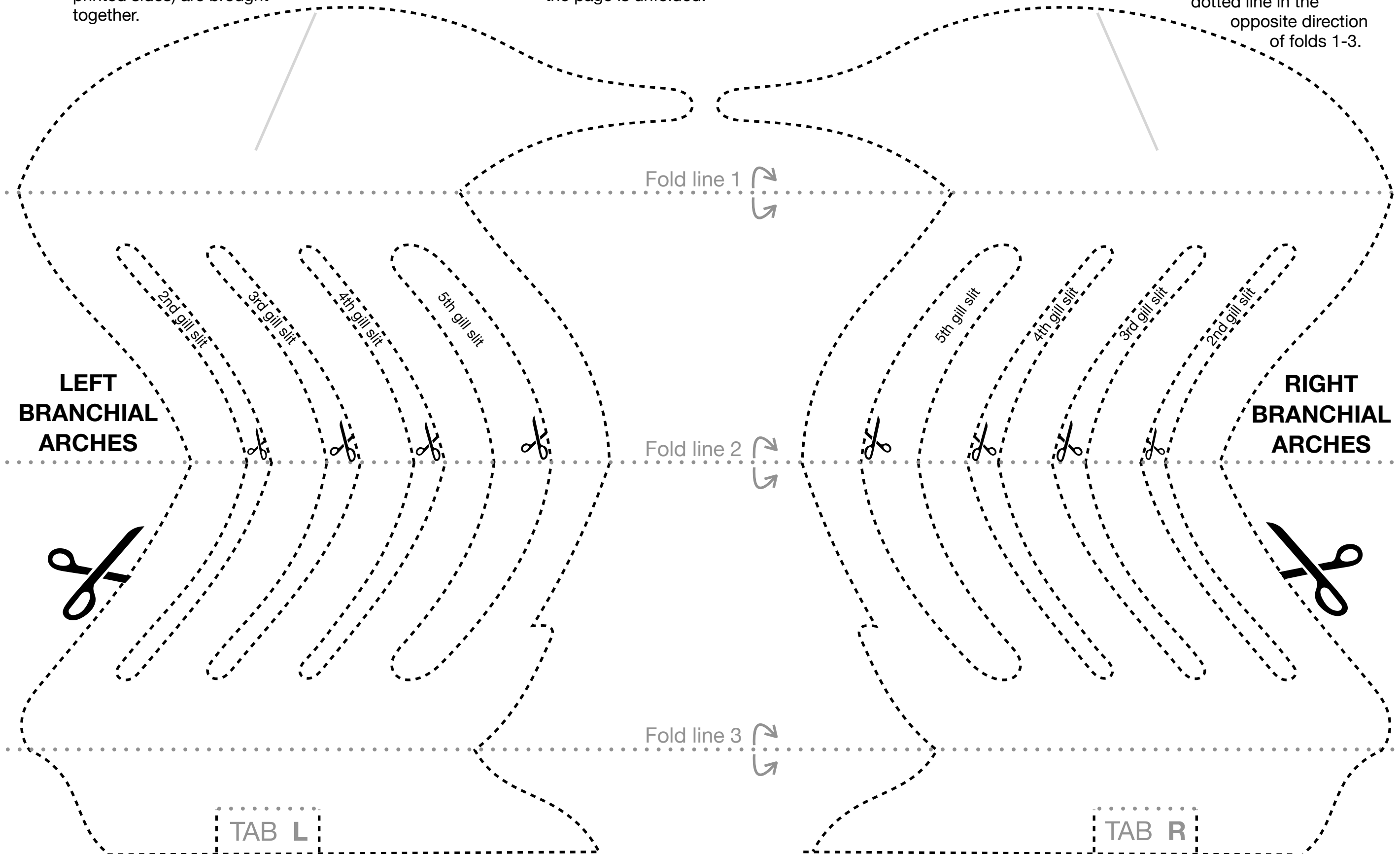


# CUTOUT INSTRUCTIONS

- 1 Fold this page at the fold lines 1, 2, and 3 (gray dotted). For each, fold this page so that the back sides of this page (the non-printed sides) are brought together.
- 2 Fold this page again at fold line 2 but keep the page folded. Cut out the left and right 2<sup>nd</sup>-5<sup>th</sup> gill slits along the dashed black lines (indicated by the small pairs of scissors). Because the page is folded, you should be cutting two sheets at once, creating internal holes when the page is unfolded.
- 3 Unfold the page and cut along the outer dashed black lines (indicated by large pairs of scissors). Careful to not cut off the tabs at the bottom.
- 4 Cut the dashed black lines on the left and right sides of the tabs at the bottom of each set of arches. Then fold (don't cut!) along the gray dotted line in the opposite direction of folds 1-3.



You'll insert this tab into the slot on the left side of the lower stand piece

## Cutout branchial arches for Shark Skull Kit

v1.2 CC NC-BY-SA by 3D Anatomy Studios

You'll insert this tab into the slot on the right side of the lower stand piece